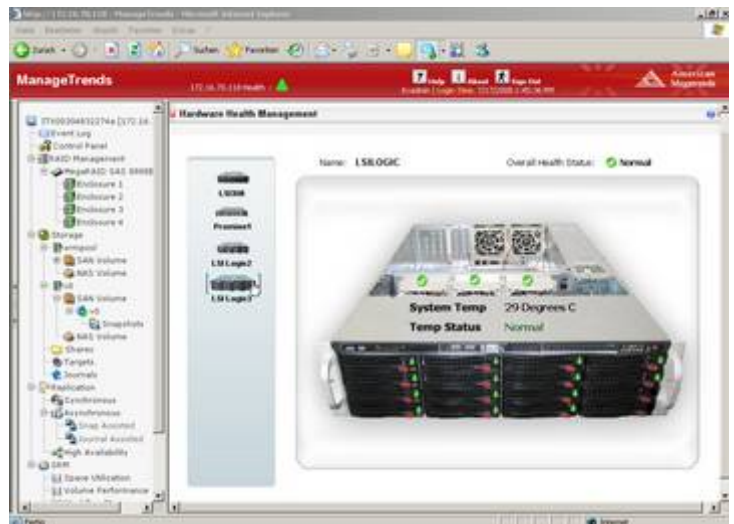


ManageTrends™ 2.7

Dual Dialect IP Storage Software

HIGHLIGHTS

- Continuous Data Protection (CDP)
- Information Lifecycle Management (ILM)
- WAN-optimization Data Service (WDS)
- System Resource Management (SRM)
- Thin & Exact Provisioning
- Advanced Snapshot
 - Redirect on Write (ROW)
 - 1024 read-only/writable snaps per volume
 - 2048 snapshots per box
 - Snapshot scheduling
 - Random snapshot rollback / deletion
- Volume Replication
 - Synchronous
 - Asynchronous (continuous)
 - Snap-assisted (continuous/periodic)*
 - Journal-assisted*
- Setup, Replication & Recovery Wizards
- High Availability
- Failover / Failback
- Volume Expansion
- Advanced Caching
 - Improves read & write-back performance
 - I/O scheduling
 - I/O aggregation



- RAID Support
- Backup Support
 - VSS / Legacy
- Integrated Web-based Management Tools
- Universal UPS Support
- Enhanced UI / Customization Tools

StorTrends® iTX 2.7 Dual Dialect Storage Software provides both file and block-based storage functionality in a single, intuitive software stack, enabling businesses to utilize existing Ethernet networks to simplify data management and reduce storage expenditures. Designed for enterprise-level high availability and disaster recovery, it is cost-effective, scalable, and suitable for both novice and advanced users. StorTrends® iTX 2.7 allows customers to enjoy the advantages of the storage centralization and scalability of IP-based Storage Area Networks, and the ease of use and file-sharing of Network Attached Storage, on a single platform at an attractive price.

StorTrends® iTX 2.7 provides enterprise-level performance, high availability and disaster recovery at a price that appeals to small and medium-size businesses (SMB).

Synchronous replication enables data to be stored on multiple StorTrends appliances at multiple sites, for high availability and disaster recovery capability.

Asynchronous replication bundles I/Os and sends them to the remote server after a small time lag, boosting network utilization efficiency and reducing bandwidth cost.

Snap-assisted replication replicates delta snapshots from the primary system in chronological order to the secondary. In the event of a failover, the system will automatically recover to the latest available consistent snapshot image. Consistency Groups assure application-aware Snapshots.

Thin provisioning enables the administrator to create and manage storage volumes without restrictions. The provisioned volume size can be significantly larger than current physical storage capacity, so he can purchase additional StorTrends appliances as their needs grow.

High Availability grouping allows two StorTrends SAN heads to be grouped as highly available cluster nodes for Microsoft® initiators, for extreme fault tolerance and always-up availability. This technology provides protection against disk, path, and node failures with automatic, seamless failover.

Advanced Snapshot capability with Redirect on Write (ROW) technology gives Administrators the ability to schedule SAN and NAS snapshots, and to create and rollback to any snapshot in under a second.

SAN snapshots are supported by using Microsoft VSS® snapshot technology, or through agents specific for application servers like Microsoft® Exchange Server and Oracle®. SQL Server through VSS. Microsoft® VSS-based snapshots support agent-less LAN-free backup.

Advanced caching improves read and write-back performance and efficient I/O scheduling, while I/O aggregation significantly improves snapshot performance.

Integrated web-based management with AMI's ManageTrends™ provides a simple configuration wizard to manage volumes, snapshots, logical disks, quotas, and alerts, and controls the discovery and management of multiple StorTrends appliances.

StorTrends® iTX 2.7 Dual Dialect Storage Software

Advanced Features

Transfer block / file data over existing network

High Availability

Adaptive Provisioning / Provision Tracking

Advanced Replication

- Synchronous
- Asynchronous

Snap-assisted

Journal-Assisted

Replication Wizard

Failover / Failback

Information Lifecycle Management (ILM)

Continuous Data Protection (CDP)

System Resource Management (SRM)

WAN-optimization Data Service (WDS)

Storage Alerts

Support for volumes up to 112TB

Volume Expansion

Advanced Snapshots

- Redirect (allocate) on Write (ROW)
- Mount as Read-Only or Read-Write
- Up to 1024 read-only snapshots per volume
- Up to 1024 writeable snapshots per volume
- Up to 2048 snapshots per box
- Near-zero degradation
- Random Snapshot Deletion
- Rollback to any snapshot

Advanced Caching

Caching Assisted Snapshot

Support for up to 64 volumes

Backup

VSS-based backup support for Windows® Servers

Backup agents for popular application servers

SAN & NAS Snapshot Scheduling

Intuitive SAN Snapshot Management

iSCSI Tape Backup Support

Networking

TCP/IP

FTP

HTTP

HTTPS

SNMP

Windows® (CIFS)

UNIX (NFS)

Apple

iSNS Configuration

Up to 16 iSNS servers are supported

Compatible with Microsoft® iSNS Server v3.0 and later versions

iSNS Client Supporting Draft 22 of iSNS Specification

Security

ACL security implementation supports:

Local users

Windows® NT/2000 Domain users

Windows® Active Directory users

NIS Domain users

iSCSI Target Configurations

iSCSI Qualified Name (iqn) format

Enable/Disable individual network ports for iSCSI traffic

iSCSI target supporting iSCSI RFC 3720

Tight iSCSI and iSNS integration

iSCSI error recovery level 0, 1 and 2

Maximum of 4 connections per session

Maximum of 64 target volumes

Multiple levels of authentication:

Mutual CHAP, User Name/Password CHAP

Authentication & iSCSI initiator

WWN Name

iSCSI Portal Tag Configuration from UI

View iSCSI data and error statistics

Management

Command Line Interface (CLI) through RS232 & SSH

Integrated Web-based Management GUI

Tools for easy customization, branding and theme updates

Event Management

Detailed Event Log

SNMP Traps (up to 4 destinations)

Remote Management

SNMP

SMIS 1.1

VDS

Storage Data Management

Information Lifecycle Management (ILM)

Storage Resource Management / Reporting Module

Journaling Storage Module

Compressed Storage Module

Storage Pool

LUN (Logical Unit Number) Creation & Management

LUN Dynamic Volume Expansion

Dynamic NAS Volume Expansion

Unified RAID Management

Software RAID (0, 1, 5)

Supports Hardware RAID controllers

Auto RAID Rebuild

UPS Support

Universal UPS Support

Supports Windows OS/iTX/Linux as UPS slaves and many UPS makes & models

Application Support

Microsoft® Exchange, Oracle®, SQL Server,

VMware® Virtual Center, VMware® ESX Server

Advanced Features

Advanced Snapshot Technology
AMI's Advanced Snapshot technology enables up to 1024 snapshots (R/O and R/W) at the block or file level. It allows for rapid creation and deletion of a snapshot, permitting faster, more secure back-ups than ever before. Advanced Snapshot technology is focused on performance, enabling customers to mount, review and instantaneously roll back to a snapshot with near-zero degradation of data.

Snapshot-assisted Replication

This technology allows chronological replication of snapshots on a remote machine, with the ability to organize by application-based consistency groups. In fail-over to a secondary appliance, StorTrends iTX will automatically rollback to the latest consistent snapshot. iTX 2.7 features up to 9 levels of snapshot compression for better link bandwidth utilization, and encryption of snapshots for increased data security.

Journal-assisted Replication

The JAR module is essentially an application layer that registers with the Journal Module as a client, and replicates data to the recovery site according to an administrator defined schedule. Data is sent to the remote site with metadata information, so that the recovery server may also maintain its own CDP log and/or create snapshots.

Advanced Caching Technology

Advanced Caching, a unique technology created by AMI, utilizes sector granularity technology based on an AMI proprietary mechanism, resulting in outstanding performance gains. Advanced Caching technology assists in snapshot readmodify-writes and in replication.

American Megatrends International GmbH
www.ami.de
Wardeinstr.3a
D- 80825 München

American Megatrends Inc.
www.ami.com
6145-F Northbelt Parkway
Norcross GA 30071